



**\*TWO BEDROOM SECOND FLOOR FLAT WITH GREAT REAR ASPECT VIEWS\***

**\*LARGE LOUNGE/DINING ROOM 21'4" x 10'6" (6.51m x 3.21m) \* \*DOUBLE GLAZED THROUGHOUT\* \*  
 MODERN WHITE KITCHEN AND BATHROOM\* \*BUILT IN WARDROBES IN BOTH BEDROOMS\*  
 \*TWO ALLOCATED PARKING SPACES\***

**A STUNNING TWO BEDROOM SECOND FLOOR FLAT with 'West Facing' views to the rear aspect.** The flat has a large Lounge/Dining Room with a separate Kitchen, two good sized Bedrooms and a modern white Bathroom. There are two allocated Parking Spaces that come with the property and attractive well-tended Communal Gardens. Ideally located for Caterham town centre and railway station which is approximately half a mile from the property. **A GREAT FIRST TIME PURCHASE!**

**Kearton Place, 169 Croydon Road, Caterham, Surrey CR3 6PU**  
**Asking Price: £269,950 Leasehold**



### **LOUNGE/DINING ROOM**

21' 4" x 10' 6" (6.50m x 3.20m)

Double glazed square bay window with views to the rear, coved ceiling, TV point and two electric storage heaters, archway to the Kitchen.

### **KITCHEN** 9' 0" x 6' 5" (2.74m x 1.95m)

Modern white kitchen with a range of wall and base units with matching worktops, single bowl stainless steel sink unit with a mixer tap and cupboards below. Built-in electric oven/grill with a four ring electric hob with an extractor fan above, space for a fridge/freezer and space and plumbing for a washing machine, coved ceiling and tiled surrounds.

### **BEDROOM ONE** 8' 8" x 9' 11" *plus door recess* (2.64m x 3.02m *plus door recess*)

Double glazed window to the side, large built-in double wardrobe with sliding mirror fronted doors, wall mounted electric heater.

### **BEDROOM TWO** 8' 8" x 7' 5" (2.64m x 2.26m)

Double glazed window to the rear, double wardrobe with sliding mirror fronted doors, electric heater.

### **BATHROOM** 6' 6" x 5' 5" (1.98m x 1.65m)

Modern white suite with tiled surrounds, comprising of a panelled bath with a mixer tap and shower attachment, pedestal wash hand basin with a wall mounted fitted mirror above and cabinet and a low flush WC. Wall mounted electric fan heater, wood effect flooring and extractor fan.

### **OUTSIDE**

### **COMMUNAL GARDENS**

Extensive Communal Gardens to the front and rear with large lawn areas to either side of a driveway leading to the Residents Parking Area. There are some flowerbeds and established borders to both sides of the Gardens and attractive Westerly Views to the rear aspect.



### **DIRECTIONS**

From Caterham Town Centre proceed along Croydon Road, proceed for approximately half a mile, Kearton Place is on the left hand side.

### **LOCATION**

Ideally located for Caterham town centre and railway station which is approximately half a mile from the property. Caterham railway station has a regular service into either London Bridge or Croydon, so ideal for the commuter. The M25 motorway can be accessed at nearby Godstone, junction 6.

The Town Centre has a great selection of local and high street shops which includes four supermarkets and Caterham Railway Station. The car commuter can access the M25 at nearby Godstone, junction 6.

The area has a good selection of Infant & Junior Schools in the Valley and in Caterham on the Hill, a secondary school at De Stafford in Burntwood Lane and a selection of private schools which includes Caterham School in Harestone Valley Road.

Caterham also has plenty of recreational facilities which includes Manor Park, White Knobs Park, De Stafford Sports Centre, Surrey National Golf Club in Chaldon and many fine countryside walks in the surrounding greenbelt countryside and woodland.

**A GREAT LOCATION FOR  
TOWN & COUNTRY LOVERS!**

### **ACCOMMODATION**

#### **COMMUNAL HALLWAY**

Carpeted Communal Hallway accessed via a Security Entryphone System with a return staircase to the second floor landing, go through the door of the right to reach the front door of the flat.

#### **ENTRANCE HALLWAY** 11' 9" x 3' 4" (3.58m x 1.02m)

L-shaped hall with a recessed storage area with shelves, built-in Airing Cupboard with a hot water tank and shelf, electric storage heater.

**PA. Jones Property Solutions, Residential Sales & Lettings**  
**77-79 High Street, Caterham, Surrey CR3 5UF**  
**Sales: 01883 348035 Lettings: 01883 343355 Email: [info@pajonespropsolutions.co.uk](mailto:info@pajonespropsolutions.co.uk)**  
**[www.pajonespropsolutions.co.uk](http://www.pajonespropsolutions.co.uk)**



**RESIDENTS PARKING**

To the rear of the Development there is a large area providing Residents Parking. The Flat has two Allocated Parking Spaces. There are also Visitor Bays available withing the Parking Area, conditions do apply.

**LEASEHOLD INFORMATION & COUNCIL TAX**

**LEASE TERM:** 125 years from 1/1/1995

**MAINTENANCE/SERVICE CHARGE:** £1,914.91 pa

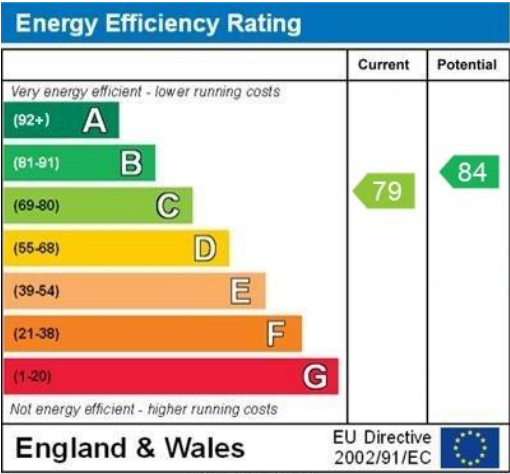
**GROUND RENT:** £50.00 pa.

The current Council Tax Band is '**D**', via Tandridge Council. Their website address to fully confirm the Council Tax Band and amount payable is: <https://www.tandridge.gov.uk/Council-tax/Your-council-tax-2025-2026>.

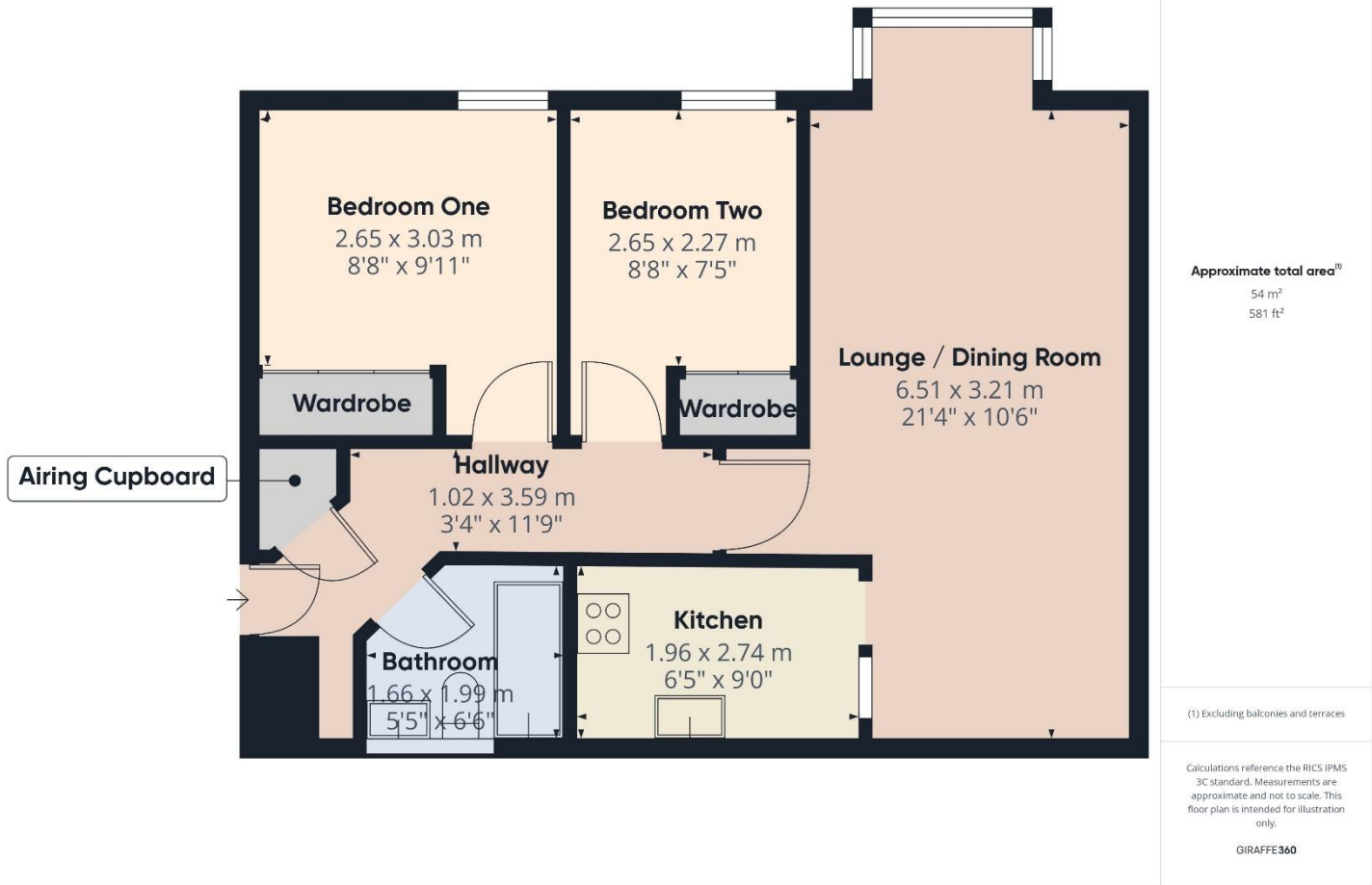
23/10/2025



**ENERGY PERFORMANCE CERTIFICATE (EPC)**



FLOORPLAN







#### **DATA PROTECTION ACT 1998**

Please note that all personal information provided by customers wishing to receive information and/or services from us will be processed by P A Jones Property Solutions, for the purpose of providing services associated with the business of an estate agent and for the additional purposes set out in the privacy policy but specifically excluding mailings or promotions by a third party. If you do not wish your personal information to be used for any of these purposes, please notify your estate agent.

**MONEY LAUNDERING REGULATIONS 2003** : Intending purchasers will be asked to produce identification and proof of financial status when an offer is received. We would ask for your co-operation in order that there will be no delay in agreeing the sale.

**THE CONSUMER PROTECTION FROM UNFAIR TRADING REGULATIONS 2008**: It is a legal requirement that the property is presented accurately and in a way not to mis-lead a potential buyer in relation to the property particulars. The Agent has not tested any apparatus, equipment, fixtures and fittings or services and so cannot verify that they are in working order or fit for the purpose. A Buyer is advised to obtain verification from their Solicitor or Surveyor. References to the Tenure of a Property are based on information supplied by the Seller. The Agent has not had sight of the title documents. A Buyer is advised to obtain verification from their Solicitor. You are advised to check the availability of this property before travelling any distance to view. We have taken every precaution to ensure that these details are accurate and not misleading. If there is any point which is of particular importance to you, please contact us and we will provide any information you require. This is advisable, particularly if you intend to travel some distance to view the property. The mention of any appliances and services within these details does not imply that they are in full and efficient working order.

**PA. Jones Property Solutions, Residential Sales & Lettings**  
**77-79 High Street, Caterham, Surrey CR3 5UF**  
**Sales: 01883 348035 Lettings: 01883 343355 Email: [info@pajonespropsolutions.co.uk](mailto:info@pajonespropsolutions.co.uk)**  
**[www.pajonespropsolutions.co.uk](http://www.pajonespropsolutions.co.uk)**